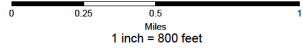




Official Zoning Map City of Negaunee, Michigan

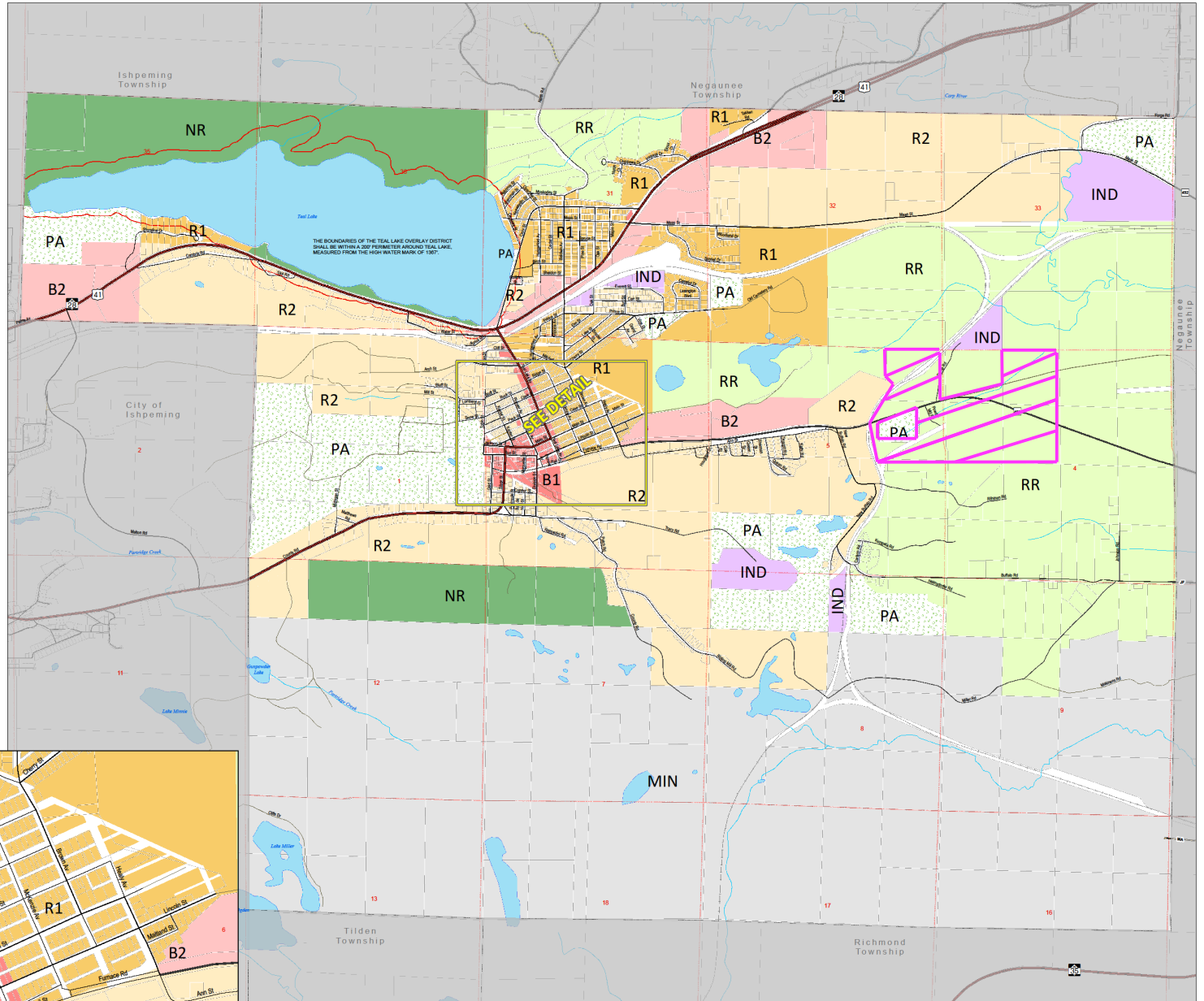
Legend

Zoning Districts	
B1- Business One	NR- Natural Resource
B2- Business Two	PA- Public Area
IND- Industrial	R1- Residential One
MIN- Mining	R2- Residential Two
	RR- Rural Residential
	Teal Lake Overlay Zone

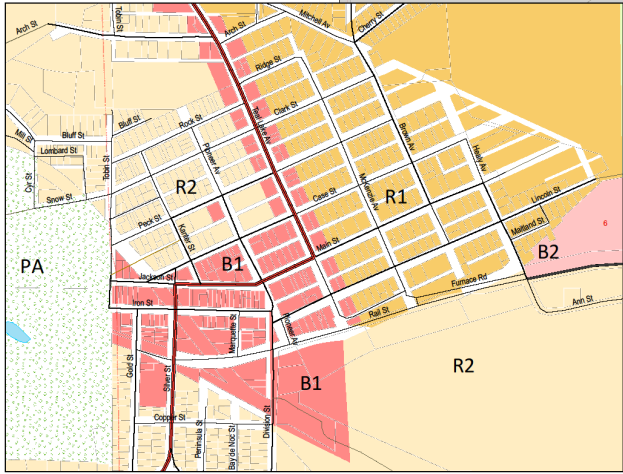


Officially adopted by the City Council of the City of Negaunee, Marquette County Michigan, on this 27th day of July, 2015.
Revised through: August 10, 2017.

Anthony K. Szwed
City Clerk *Judith B. Szwed*



DETAIL: DOWNTOWN NEGAUNEE



ZONING MAP AMENDMENTS					
NO.	DATE OF ADOPTION	ZONING DISTRICT		LOCATION	MAP UPDATED BY
		PREVIOUS	REVISED		
1					
2					
3					
4					

The information and data provided hereunder has been compiled from various sources, and is used by the County of Marquette for its own general purposes. The County does not warrant or guarantee that this information and data is accurate or current, nor does the County warrant or guarantee that this information and data is fit for any particular use or purpose. More specifically, the County warrants that this information and data is not intended to be, and should not be used to determine individual ownership, lot lines, or lines of easements with respect to real estate. Any recipient of this information and data should independently verify its accuracy before relying on it for any purposes. The County of Marquette and its officers, agents, employees, boards, and commissions shall not be liable for any inaccuracies or omissions in this information and data.